



STENECOURT

HALL HIRE

stenecourt.com/hall-hire



STENECOURT

Stenecourt was the first kehilla in Manchester, starting as long ago as the 1790s in a small room. Via the Great Synagogue in Cheetham Hill Road, it moved to its current site in 1954.

The Stenecourt building now houses a bright, modern shul and a number of flexible rooms suitable for all kinds of simchas and events.

Situated in the very heart of the North Manchester Kehilla, Stenecourt is the ideal venue for your simchah.

THE MAX & HANNA ROWE HALL

The largest of our spaces, the Max & Hanna Rowe Hall is a staple of community events, hosting dinners, kiddushim, receptions, siyumim and so much more.

Capacity:

- Kiddushim: 450 guests
- Dinners: 220 guests
- With Dance Floor: 170 guests

Prices from £450

Dimensions: 19m x 12m | Size: 228 sq.m



THE RECEPTION ROOM

The Reception Room is perfect for smaller, more intimate functions. Often used for a family lunch after a kiddush and for sheva brachos.

Capacity:

- Kiddushim: 100 guests
- Dinners: 70 guests

Prices from £200

Dimensions: 10m x 7.5m | Size: 75 sq.m



THE MAX & HANNA ROWE HALL AND THE RECEPTION ROOM

The Reception Room can be opened up into the Max & Hanna Rowe Hall to create a single open space. The bar in the Reception Room can be a perfect addition to a kiddush.

Capacity:

- Kiddushim: 500 guests
- Dinners: 250 guests
- With Dance Floor: 200 guests

Prices from £450

Combined Size: 300 square metres





THE NEW HALL

The New Hall is a modern, bright space which can be opened up into an all-season garden area. It also has an in-built sukkah along one side.

Capacity:

- Kiddushim: 250 guests
- Dinners: 100 guests
- Under Sukkah: 50 guests

Prices from £350

Dimensions: 12m x 11m | Size: 132 sq.m

CATERING FACILITIES

Stenecourt has a large, well-appointed kitchen suitable for catering all functions. All caterers must have supervision for the duration of all events.

All food brought into Stenecourt must be certified kosher to ensure the kashrus of our facilities for everyone.

Self-catering (in the form of heating up certified kosher food) is possible using our industrial warming cupboards and ovens, with prior approval. Please discuss this with us at the time of booking.



GENERAL FACILITIES



High-speed WiFi throughout



On-site car parking for up to 8 cars



Disabled access to all halls

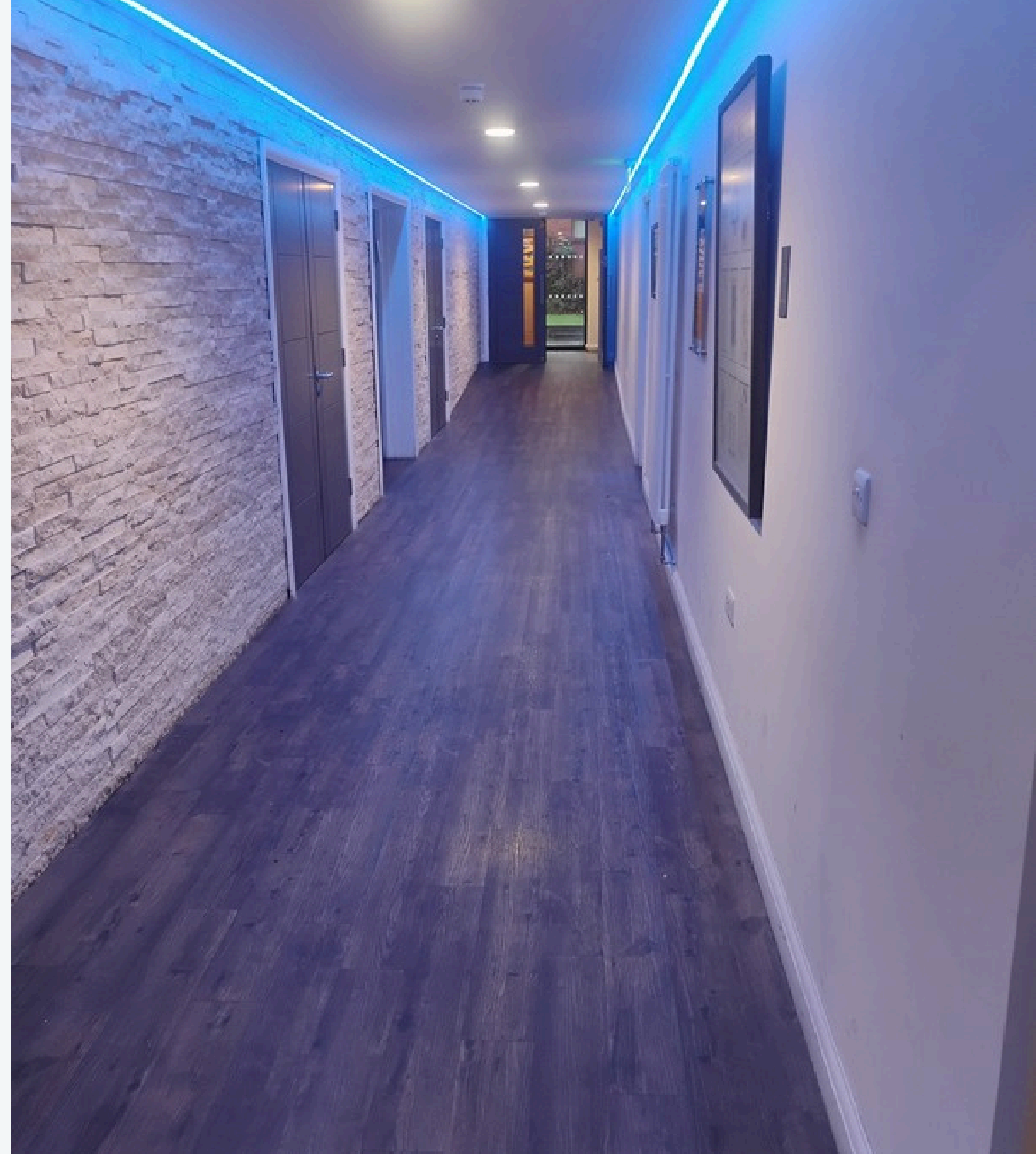
IMPORTANT CONDITIONS OF USE



All events must end by midnight (including all caterers, staff etc off-site), unless otherwise agreed.



For the benefit of all users, all food brought in must be supervised and hashgacha must be provided by the Manchester Beis Din or MH.





THE LIVSHIN ROOM

The Livshin Room is a bright, flexible space often used for a Kabbolas Panim but also suitable for shiurim, small conferences and meetings

Capacity:

- With Tables: 25 guests
- Chairs Only: 45 guests

Prices from £50

Dimensions: 12m x 11m | Size: 132 sq.m

THE FEINGOLD ROOM

THE MARGA BRODIE ROOM

The Feingold Room and the Marga Brodie Room are smaller, quiet spaces.

They are perfect for meetings and training sessions.

They can also be used as classrooms
could be used as temporary office space
during the week.

Feingold Room

Dimensions: 5m x 4.2m | Size: 21 sq.m

Marga Brodie Room

Dimensions: 3.2m x 5.4m | Size: 17 sq.m





OUR PARTNERS

We're proud to work with these excellent partners to delivery outstanding events.

Caterers

World Class Cuisine (Wreschner)

wccuisine.co.uk

Ushy Kosher Catering

ushykoshercatering.co.uk

Event Planners

Qube Events

debbie-marks.com

We Are Events

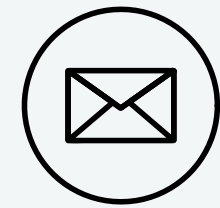
weareevents.co.uk



CONTACT INFORMATION



0161 792 8399



shul@stenecourt.com



stenecourt.com/hall-hire



30 Singleton Road, Salford, M7 4LN

All capacities calculated based on Building Regulations, Fire safety, Approved Document B, Table D1